



BRACKENRIDGE ESTATE

ENVIRONMENTAL CONTROL OFFICER REPORT

Report: #8

Period: 1 February to 28 February 2025

Date: 24 February 2025

Author: Kellyn Whitehead, MSc / ECO Brackenridge Estate



TABLE OF CONTENTS

Overview	3
Fire management	4
Wildlife	5
Invasive Alien Control	6
Open spaces	9
Appendix A	12
Appendix B	14
Appendix C	17
Appendix D	18

OVERVIEW

The aim of this report is to document the deliverables agreed upon between the Homeowners Association (HOA), the Environmental Management Committee (EMC) and the Environmental Control Officer (ECO) to ensure the proper management of Brackenridge.

The report will be updated every month by the ECO, detailing the action plans for each deliverable, what has been achieved, what still needs to be completed and any recommendations for both estate management and homeowners.

All environmental management on the estate will be done in accordance with the Environmental Audit conducted by Professor Patricia Holmes in October 2023 and the updated Environmental Management Plan drawn up in October 2023.

Any new environmental concerns that are discovered during maintenance, or any changes found regarding the guidelines of the environmental audit, will be communicated in this report.

Any concerns or questions that homeowners may have in reference to environmental management can be addressed to either the General Manager or the ECO.

General Manager
manager@brackenridge.co.za
044 533 6547

Kellyn Whitehead, ECO
kellynwhitehead4@gmail.com
044 533 6547

ACTION POINT: Prescribed burns.

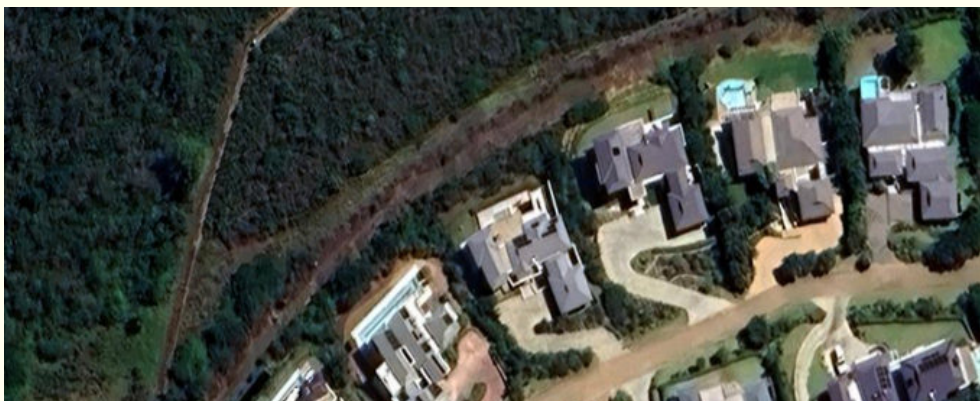
RELEVANCE: Regeneration and maintenance of endangered Garden Route Shale Fynbos; help circumvention of wildfires.

DELIVERABLES: Invasive alien control, fire belt cutting, permits, fuel reduction, prescribed burn, mopping up.

- Please refer to EMP, page 9 - 12 for more details.

Pre-burn preparation for Block 1 (11.8 ha).

The Working on Fire (WoF) team completed the fire break for block one and moved on to cutting down tall vegetation to waist height as well as cutting down the alien vegetation. The vegetation will be stacked across the block and left to dry out in preparation for the controlled burn in April.



WILDLIFE

Wildlife is returning to blocks five and six. Sightings of a female duiker and her calf were made in block six and a Cape Grysbok in block five. A family of three Spotted Thick-knees have moved into block five, close to the reservoir. Flocks of birds have been witnessed in both blocks post-burn. Insect life has also increased with the presence of bees, butterflies, locusts, grasshoppers and healthy ant colonies.

Our local celebrity, tortoise number 5, has been on the move throughout the estate with many sightings in Orchid Valley, Watsonia Heights and Bitou Glade. The rest of our tortoise family have also made appearances in gardens and communal areas on the estate.



ACTION POINT: Control growth and spread of invasive plant species.

RELEVANCE: Restoration of native ecosystems.

DELIVERABLES: Invasive alien control, Integrated Fire and Alien Species Management Plan.

- Please refer to EMP, page 13 for more details.

At the beginning of February, a local alien invasive species (AIS) clearing team began removing AIS in five earmarked areas on the estate. Elsie and her team have done an amazing job thus far, having successfully cleared sections one, two and three by the 13th of this month. AIS clearing w continues in sections four and five from the 24th and expected to be completed within the first couple of weeks of March.

Upon inspection of block five by the ECO, four new species of alien invasive plants have been discovered. These include the Apple-of-Peru (*Nicandra physalodes*), Devil's Trumpet (*Datura stramonium*), Wild Verbena (*Verbena bonariensis*) and the Ink Berry (*Phytolacca octandra*).

The Apple-of-Peru can be mistaken for a Cape Gooseberry if one is not familiar with the differences between them (see below images). A small population of Port Jackson were located in block five, close to the reservoir and removed by the Home from Home team.

AIS removal will continue in blocks five and six.

INVASIVE ALIEN CONTROL

Alien invasive clearing by Elsie's team.



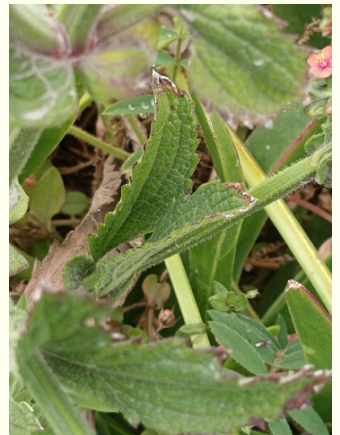
INVASIVE ALIEN CONTROL



Ink Berry (*Phytolacca octandra*)



Apple-of-Peru (*Nicandra physalodes*)



Wild Verbena (*Verbena bonariensis*)



Devil's Trumpet (*Datura stramonium*)

ACTION POINT: Maintain open spaces to standard specified in the approval of the site development plan.

RELEVANCE: Open spaces are aesthetically pleasing and ecologically viable.

DELIVERABLES: maintenance of roads, services and pedestrian network, erosion control, waste, and litter control.

- Please refer to EMP, page 14 - 15 for more details.

Work has begun on the pathways of blocks five and six by the Home from Home team. The pathways will be cut down to one meter in width where necessary and all the grass will be mowed on either side of the pathway. Going forward, where appropriate, this will be the standard for all the walking trails.

The sinkholes along the pathway in block five have been repaired by JB Civil Engineering and the pathway re-compacted. The next heavy rains will tell if this problem has been solved.

The Home from Home team have taken the extra topsoil brought into block five and spread it along the clay-ridden corner near the steps which will allow for plant growth.

Eldred and his team have constructed new steps at the beginning of the Protea Park walking trail (block five) on the Protea Dale/Bitou Glade side, and a new pathway dug into the slope and covered with wood chips.

Blocks five and six are showing signs of new Fynbos immersing post-burn with a selection of new species being recorded in both blocks. Some species include the Garden Route ragwort (*Sencio pterophorus*), Flower-of-an-hour (*Hibiscus trionum*), *Erica sparsa*, Cape Sweetpea (*Dipogon lignosus*), and a range of pelargoniums.

OPEN SPACES

Block six pathway maintenance.



Block five pathway maintenance.



Block five new steps and pathway.



OPEN SPACES

Laying of fresh topsoil in bock five.



Appendix A

Block 5 pre-burn plant species list

SCIENTIFIC NAME	COMMON NAME	COMMENTS
<i>Acacia cyclops</i>	Rooikrans	Invasive
<i>Buddleja salciifolia</i>	Sagewood	
<i>Centella asiatica</i>	Asian pennywort	
<i>cf Carpobrotus</i>	Sourfig	Awaiting ID
<i>cf Gnidia</i>	Cape saffron	Awaiting ID
<i>cf Restio</i>	True Cape reeds	Awaiting ID
<i>cf Satyrium</i>	Satyr orchid	Awaiting ID
<i>Chironia baccifera</i>	Christmas berry	Endemic to SA
<i>Chloris gayana</i>	Rhodes grass	
<i>Cliffortia stricta</i>	Staid Cape rose	Endemic to Fynbos
<i>Colpoon compressum</i>	Cape sumach	
<i>Erica canaliculata</i>	Hairy grey heather	Endemic to Fynbos
<i>Eriocephalus africanus</i>	Wild rosemary	Endemic to SA
<i>Euryops virgineus</i>	Virgin true-eye	Endemic to SA
<i>Haemanthus sanguineus</i>	Smooth bloodlily	Endemic to SA

Appendix A

SCIENTIFIC NAME	COMMON NAME	COMMENTS
<i>Helichrysum cymosum</i>	Fume everlasting	Endemic to SA
<i>Helichrysum foetidum</i>	Stinking everlasting	Endemic to SA
<i>Helichrysum petiolare</i>	Silver everlasting	Endemic to SA
<i>Hippia frutescens</i>	Scrambling stinkals	Endemic to SA
<i>Leucadendron salignum</i>	Common sunshine conebrush	Endemic to Fynbos
<i>Metalasia acuta</i>	Pointy blombos	Endemic to Fynbos
<i>Metalasia pungens</i>	Stink blombos	Endemic to Fynbos
<i>Osteospermum monolifera</i>	Bietou bush	Endemic to WC
<i>Oxalis imbricata</i>	Tile sorrel	Endemic to SA
<i>Passerina corymbosa</i>	Common gonna	Endemic to SA
<i>Pinus sp.</i>	Pine	Invasive
<i>Podalyria burchelli</i>	Hairy Cape sweetpea	Endemic to Fynbos
<i>Selago canescens</i>	Skinny bitterbush	Endemic to Fynbos
<i>Selago corymbosa</i>	Stiff bitterbush	Endemic to Fynbos
<i>Seriphium plumosum</i>	Common snake bush	
<i>Sersia lucida</i>	Blinktaaibos	

Appendix B

Block 6 pre-burn plant species list

SCIENTIFIC NAME	COMMON NAME	COMMENTS
<i>Anthanasia dentata</i>	Geel Blombos	Endemic to Fynbos
<i>Aspalathus ciliaris</i>	Fringe Cape gorse	Endemic to Fynbos
<i>Asaragus asparagoides</i>	Bridal asparagus	
<i>Burchellia bubalina</i>	Wild pomegranate	
<i>Centella asiatica</i>	Asian pennywort	
<i>cf Anthospermum</i>		Awaiting ID
<i>cf Asteriodae</i>	Daisy	Awaiting ID
<i>cf Carpobrotus</i>	Sourfig	Awaiting ID
<i>Chironia baccifera</i>	Christmas berry	Endemic to SA
<i>Cliffortia stricta</i>	Staid Cape rose	Endemic to Fynbos
<i>Colpoon compressum</i>	Cape sumach	
<i>Cyrtanthus contractus</i>	Common fire lily	
<i>Diospyros dichrophylla</i>	Poison star apple	
<i>Erica canaliculata</i>	Hairy grey heather	Endemic to Fynbos
<i>Erica peltata</i>	Shield heath	Endemic to Fynbos
<i>Grewia occidentalis</i>	Common cross berry	

Appendix B

SCIENTIFIC NAME	COMMON NAME	COMMENTS
<i>Halleria lucida</i>	Tree fuchsia	
<i>Helichrysum cymosum</i>	Fume everlasting	Endemic to SA
<i>Helichrysum foetidum</i>	Stinking everlasting	Endemic to SA
<i>Helichrysum petiolare</i>	Silver everlasting	Endemic to SA
<i>Hippia frutescens</i>	Scrambling stinkals	Endemic to SA
<i>Hypoxis villosa</i>	Shaggy star grass	
<i>Leucadendron salignum</i>	Common sunshine conebush	Endemic to Fynbos
<i>Metalasia acuta</i>	Pointy blombos	Endemic to Fynbos
<i>Metalasia pungens</i>	Stink blombos	Endemic to Fynbos
<i>Monopsis unidentata</i>	Wild violet	Endemic to SA
<i>Nidorella ivifolia</i>	Oven bush	
<i>Nidorella ulmifolia</i>	Ulm vleiweed	
<i>Osteospermum monolifera</i>	Bietou bush	Endemic to WC
<i>Oxalis imbricata</i>	Tile sorrel	Endemic to SA
<i>Oxalis purpurea</i>	Purple sorrel	Endemic to SA
<i>Passerina corymbosa</i>	Common gonna	Endemic to SA

Appendix B

SCIENTIFIC NAME	COMMON NAME	COMMENTS
<i>Pinus sp.</i>	Pine	Invasive
<i>Plecostachys serpyllifolia</i>	Petite-licorice	Endemic to SA
<i>Podalyria burchelli</i>	Hairy Cape sweetpea	Endemic to Fynbos
<i>Psoralea axillaris</i>	Violet-flash fountain bush	Endemic to SA
<i>Rapanea melanophloeos</i>	Cape beech	
<i>Selago canescens</i>	Skinny bitterbush	Endemic to Fynbos
<i>Selago corymbosa</i>	Stiff bitterbush	Endemic to Fynbos
<i>Seriphium plumosum</i>	Common snake bush	
<i>Sersia lucida</i>	Blinktaaibos	
<i>Sideroxylon inerme</i>	White milkwood	Protected
<i>Struthiola hirsuta</i>	Shaggy Cape spray	Endemic to Fynbos
<i>Tarchonanthus littoralis</i>	Coastal camphor bush	Endemic to SA
<i>Tecomaria capensis</i>	Cape honeysuckle	
<i>Westringia fruticosa</i>	Coastal rosemary	

Appendix C

Block 5 post-burn plant species list

SCIENTIFIC NAME	COMMON NAME	COMMENTS
<i>Disa bracteata</i>	Bract orchid	Endemic to Fynbos
<i>Fumaria muralis</i>	Wall fume	Introduced - weed
<i>Hibiscus trionum</i>	Flower-of-an-hour	
<i>Pelargonium grossularoides</i>	Coconut stroksbill	
<i>Satryium membranaceum</i>	Membrane orchid	Endemic to Fynbos
<i>Selago spp.</i>		
<i>Senecio pterophorus</i>	Garden Route ragwort	

Appendix D

Block 6 post-burn plant species list

SCIENTIFIC NAME	COMMON NAME	COMMENTS
<i>Dipogon lignosus</i>	Cape sweet pea	
<i>Disa bracteata</i>	Bract orchid	Endemic to Fynbos
<i>Fumaria muralis</i>	Wall fume	Introduced - weed
<i>Hibiscus trionum</i>	Flower-of-an-hour	
<i>Hypoxis angustifolia</i>	Narrow stargrass	
<i>Ixia orientalis</i>	Eastern kalossie	Endemic to SA
<i>Pelargonium grossularoides</i>	Coconut storksbill	
<i>Senecio pterophorus</i>	Garden Route ragwort	